

The Path to MEDITECH Expanse:

Why Your Organization Needs
a Single EHR



Table of Contents

Chapter 1: Introduction to MEDITECH	1
Expand	
Industry Insights and Reviews	2
Chapter 2: Current Landscape	3
Evolution of MEDITECH	5
Chapter 3: Benefits of a Single EHR Solution	6
Supporting Growth	8
Chapter 4: How to Navigate the Path Forward	10
Questions to Ask Prospective Vendors and Partners	13
Closing Comments	14



CHAPTER 1

Introduction to MEDITECH Expanse

Overview of Expanse

How is MEDITECH Expanse different from previous versions of MEDITECH?

MEDITECH Expanse is the most recent version of the MEDITECH electronic health record (EHR) or health information system (HIS). It is by far the most advanced, comprehensive suite of integrated applications that MEDITECH has ever brought to the market.

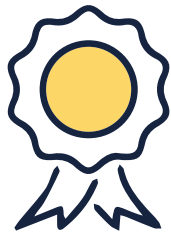
What capabilities does Expanse offer?

Expanse uses a workflow-based approach for data capture, user input and reporting. Its features are simplified and streamlined, and the new cloud-based architecture extends support for multiuser and virtualization technologies, meeting user access demands seamlessly.



Industry Insights and Reviews

The industry has recently given MEDITECH Expans high marks when compared with its competitors.



Earned top honors in Best of KLAS 2021 report in the following categories: Acute Care EMR (Community Hospital), Patient Accounting & Patient Management (Community Hospital) and Home Health EHR (Small/ 1-200 average daily census)

<https://ehr.meditech.com/about-meditech/awards>¹

Ranked #2 in the 2021 Overall Software Suite Rankings by KLAS

<https://ehr.meditech.com/about-meditech/awards>²



Received the Highest Client Satisfaction Award for Inpatient EHR and Ranked #1 in Nurse Functionality and Usability by Black Book Research

<https://ehr.meditech.com/news/meditech-receives-black-book-researchs-highest-client-satisfaction-award-for-inpatient-ehr>³



CHAPTER 2

Current Landscape

Considerations for Various Scenarios

Whether you are a MEDITECH-based organization that has yet to move to Expanse, an Expanse-based organization that has not yet added MT Ambulatory, or find yourself somewhere in between, you're in luck.

Here are some reasons why considering a move from your older MEDITECH version to MEDITECH Expanse may make sense for your organization:

Comprehensive view of the patient.

A comprehensive, single EHR that allows multiple stakeholders to access appropriate information about the patient condition helps facilitate accurate and timely care decisions. Benefits for stakeholder groups are invaluable.

- Hospitalists have access to the patient's complete acute and ambulatory record. Results and conditions are fully documented and available to all caregivers working with the patient.
- Specialty caregivers such as those in Urology and Oncology can draw data from multiple sources into a single panel tailored for their specific field of medicine.

Liberation of data that was once available only to clinicians.

Now nurses, therapists and other caregivers can help conduct patient handoffs, review patient education, discuss discharge plans and more at the bedside. They can also navigate the chart, electronic documents, and data with the patient in real time versus later at the nurses' station.

- Physical and occupational therapists need to be aware of information that originates as test results from another discipline, such as Lab or Radiology.



More reasons why moving to MEDITECH Expanse may make sense for your organization:

Expanded use of easier-to-use analytics software.

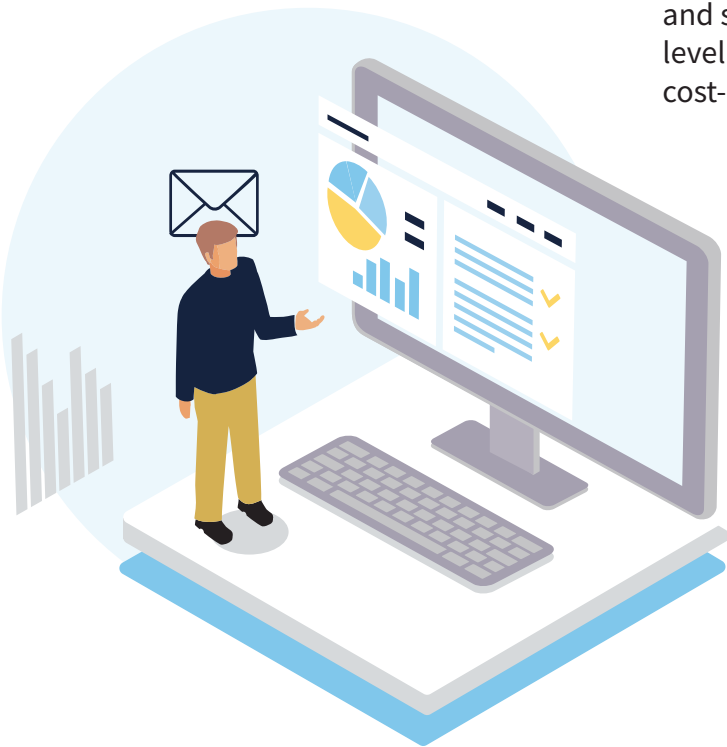
Data analytics are more approachable and user-friendly. Gone are the days of needing a programmer to navigate the software or write a complex report. Now you can do it all from a mobile, secure source with access to more modern data analytics.

- Analytics are easier to generate, and you don't need a programmer or highly skilled IT resource to do it for you.
- Time-sensitive assessments can be made quickly and completely thanks to mobile access to data. This allows for real-time viewing of patient care data and other features within the EMR.

Supports cost effective, patient-centered care plans.

The ability to apply rules to orders in real-time can help further patient quality efforts and drive practice patterns.

- A patient might need a broad-spectrum antibiotic with a large cost per dose. To save money, the physician or pharmacist might request a generic version to have the same effect. Logic and system type technologies help clinicians, physicians, mid-level staff and especially pharmacists create more coordinated, cost-effective, patient-centric plans of care.



Evolution of MEDITECH

Let's look back at MEDITECH's **history**. As you can see, MEDITECH has come a long way over the years, from the early days of MAGIC to the current Expanse model. Where is your organization in the journey?

Simplified Records Management

In recent years, MEDITECH has made electronic records as comprehensive as possible. With Expanse, the technology platform centers around 17 specific workflows that contribute to ease of use and simplified access to the desired information. Workflows include:

- Discharge across the Continuum
- Medication Reconciliation
- Medical Necessity
- Order Reconciliation
- Transitions of Care
- Shared Demographics
- Portal/Patient Engagement
- Centralized Scheduling
- Embedded Quality Measures
- Charge Generation and Reconciliation
- Charge Forwarding
- Physician Documentation
- Insurance Management
- Referral Orders
- Chart Views
- Diagnosis Code Management
- Pre-Visit Chart Prep



CHAPTER 3

Benefits of a Single EHR Solution



Five Compelling Reasons Your Organization Needs One EHR

1

Your current EHR is limited in the ways it handles today's healthcare challenges and changes.

One of the main reasons customers move to Expanse is this: It helps them achieve a single electronic medical record across the acute and ambulatory setting. This bodes well for patients receiving care and dramatically helps caregivers providing it.

2

Your stakeholders, clinicians, patients and communities need more than your current EHR can deliver.

In today's world of constantly changing technology, if you're not ahead of the game, you're behind. Expanse allows customers to make the most of their MEDITECH investment while staying up to date with clinical innovations and government requirements, all while maintaining top-tier standards of care.

3

Your current EHR is costly and risky to maintain and support.

If you are running an older version of MEDITECH or an entirely different system, it can be easy to become complacent and do what you've always done. However, older doesn't always mean better. Without proper maintenance, you're looking at increased threats of risk, such as security gaps, data corruption, downtime or outdated workflows that result in missed billing charges.



4

You are missing out on new functionality that could improve efficiency, satisfaction and quality.

If you continue to use MEDITECH MAGIC or Client Server based systems, you fail to benefit from new functions and features that promote your organization's success. Integrations to Expanse are tighter than ever and the data sharing works well.

5

You could use clinical toolkits within Expanse to achieve patient safety goals and workflow efficiencies more easily.

Clinical toolkits put the patient at the center of care and address a variety of patient safety issues. Over the years MEDITECH has updated these toolkits and they are only available in Expanse. All clinical data and information in the EHR can be used to affect, alter, and most important, improve patient care decisions.

In today's everchanging world of M&A activity and multi-EHR systems, it's important to emphasize the value of standardizing data for enterprise-wide reporting. While a single EHR has many benefits, it's sometimes not feasible for larger systems to execute. If implementing a complete overhaul is not an option, making sure you have a cohesive library of data where caregivers have easy access to make better decisions is always a great alternative.

Supporting Growth

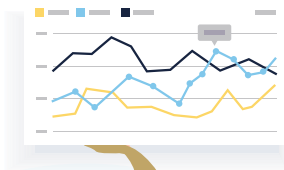
Reduce Costs and Duplication of Effort

With Expanse, you have the opportunity to significantly reduce costs across the organization. A big reason for this is less duplication of effort. Time is money, after all! Whether it's elimination of multiple diagnostic tests, oversight of numerous disparate systems, or less reliance on IT staffing support—freeing them up to do other things—your organization will reap the rewards in savings.

CASE STUDY: MEMORIAL HEALTHCARE SYSTEM

Background

Memorial Healthcare is a 160-bed hospital and healthcare organization in Owosso, Michigan. In 2015, Memorial made the strategic decision to remain independent. Around that same time, Thomas Kurtz, PhD, came on board as Vice President of Information Services and Chief Information Officer. Kurtz was tasked early on with replacing Memorial's aging healthcare information systems, MEDITECH MAGIC, and their ambulatory system, Allscripts.



CereCore's Role

CereCore partnered with Memorial Healthcare on a single go-live where all clinics and the hospital changed over to the new system simultaneously. This 11-month project involved multiple disciplines to support acute care, ambulatory, oncology, surgery and pharmacy in the following areas:

- Project Management
- Assessment
- Workflow and System Design
- Data Migration
- Reporting
- Testing
- Consulting

Results

- One of 10 hospitals in Michigan to receive a 5-star rating from CMS
- Earned an “A” rating from The Leapfrog Group
- Achieved 50% net revenue growth in the last five years
- Continues to make strides in quality and safety

“When I signed the MEDITECH contracts we had 62 providers. We have 100 today. We’ve employed our hospitalist group which is an additional 10 providers, 3 neurologists, a pulmonologist and multiple family practice providers.”

Thomas Kurtz, Ph.D.

Vice President of Information Services and Business Development and Chief Information Officer

CHAPTER 4

How to Navigate the Path Forward

Strong Plan

Ready to move to Expand? Having a solid plan in place is a crucial first step to make sure you're ready to implement Expand.

Says Kurtz, "I would have taken more time at the front end of the project to look at our workflows to plan out the implementation and how we wanted to do things globally. Take your time to do your pre-work. Dedicate time to complete an organizational process map and identify gaps and current state metrics."

This kind of prep goes a long way in making sure you're not disrupting the delivery of patient care or the workflows of ancillary care teams.



Budgeting and Operational Impact

In addition to having a strong IT plan, it's important to know what else to expect when moving to MEDITECH Expanse. We know that making such a huge shift in the way data is stored and accessed can have a huge impact on an organization's day-to-day functions, so here are some operational considerations to keep in mind:

- **Release management.** CereCore offers a full lineup of release management services in a fixed-fee or subscription model. This includes system validation, integrated testing, decision review and reports, and customer dashboard. Take the pressure off your internal team to execute systems tasks that may distract their focus on the bigger picture. [Learn how we can help accelerate upgrades.](#)
- **Regulatory reporting.** You have several options when it comes to reporting: MEDITECH's Business & Clinical Analytics vs. Microsoft SQL and/or PowerBI. We have cost-conscious recommendations based on our years of experience coupled with a track record of 100% on-time complete submissions. Review our [recommendations](#) and comparisons between PowerBI and other solutions for regulatory reporting as well as the respective pricing models.
- **Data archiving** is an important consideration when implementing Expanse. Since not all of your data will convert, organizations must determine the best course of action for providing access to legacy data. Our Legacy Data Archive solution and services offer a long-term, cost-effective and easy-to-access solution for legacy data without the expense associated with licensing and maintaining legacy software. Learn more about this cost-effective [approach.](#)





The End Result

Whether you are ready to move forward with an implementation of MEDITECH Expanse, the need to derive greater value from your existing EHR platform, or to optimize operations in a multi-EHR organization, the considerations above offer a strategy to help you do more with less.

When budgets or resources are stretched to the limits, a key strategy is to empower operational efficiency within applications you have in place. Take [Thomas Health's story](#), for example. Merging two organizations onto the same EMR platform was not their first step in their journey to Expanse. Instead, they focused time and effort on optimization to support clinical and operational needs that ensured readiness to move to MEDITECH Expanse.

[SEE MORE CLIENT SUCCESS STORIES](#)

Questions to Ask Prospective Vendors and Partners

The path to MEDITECH Expanse is a significant transition. Where should you begin? Here are some questions to start the conversation that will help you determine a good fit.

- Have you done this kind of MEDITECH migration in the past 5 years?
- What examples do you have from other migrations you've done?
- How does MEDITECH (specifically Expanse) help our organization get to the next level of operational efficiency?
- How can you help assess our readiness for Expanse based on our current deployment?
- What time frame are we looking at for a migration? For reference, most MEDITECH migrations take 9 months on the expedited end and 15-18 months for large organizations.
- What stakeholders need to be involved to allow for the smoothest migration/implementation?
- What are your best practices that will be most important for our team?
- What key areas will need specific focus to help determine the project scope and timeline?
- What expectations do we need to set regarding how decisions are made?



Closing Comments

The lessons learned in this eBook come from CereCore's legacy of hospital operations and experience as MEDITECH customers and clinical users. The beauty of working with CereCore is that our consulting and support teams focus on patient care first. Wherever you are in the MEDITECH journey, opportunities abound for cost savings and making patient care easier across all care settings.

Learn more about our [MEDITECH services](#).

SUBSCRIBE TO OUR MEDITECH RESOURCE LIBRARY

Sources:

¹ <https://ehr.meditech.com/about-meditech/awards>

² <https://ehr.meditech.com/about-meditech/awards>

³ <https://ehr.meditech.com/news/meditech-receives-black-book-researchs-highest-client-satisfaction-award-for-inpatient-ehr>



cerecore.net



p: 855.276.9112 | e: info@cerecore.net

ABOUT US

CereCore® provides IT services that make it easier for you to focus on supporting hospital operations and transforming healthcare through technology. With a heritage rooted in our nation's top-performing hospitals, we serve as leaders and experts in technology, operations, data security, and clinical applications. We partner with clients to become an extension of the team through comprehensive IT and application support, technical professional and managed services, IT advisory services, and EHR consulting, because we know firsthand the power that integrated technology has on patient care and communities.